

Transit Development Plan

GMTA's Guide for Future Growth

Service Strategies

May 31, 2011

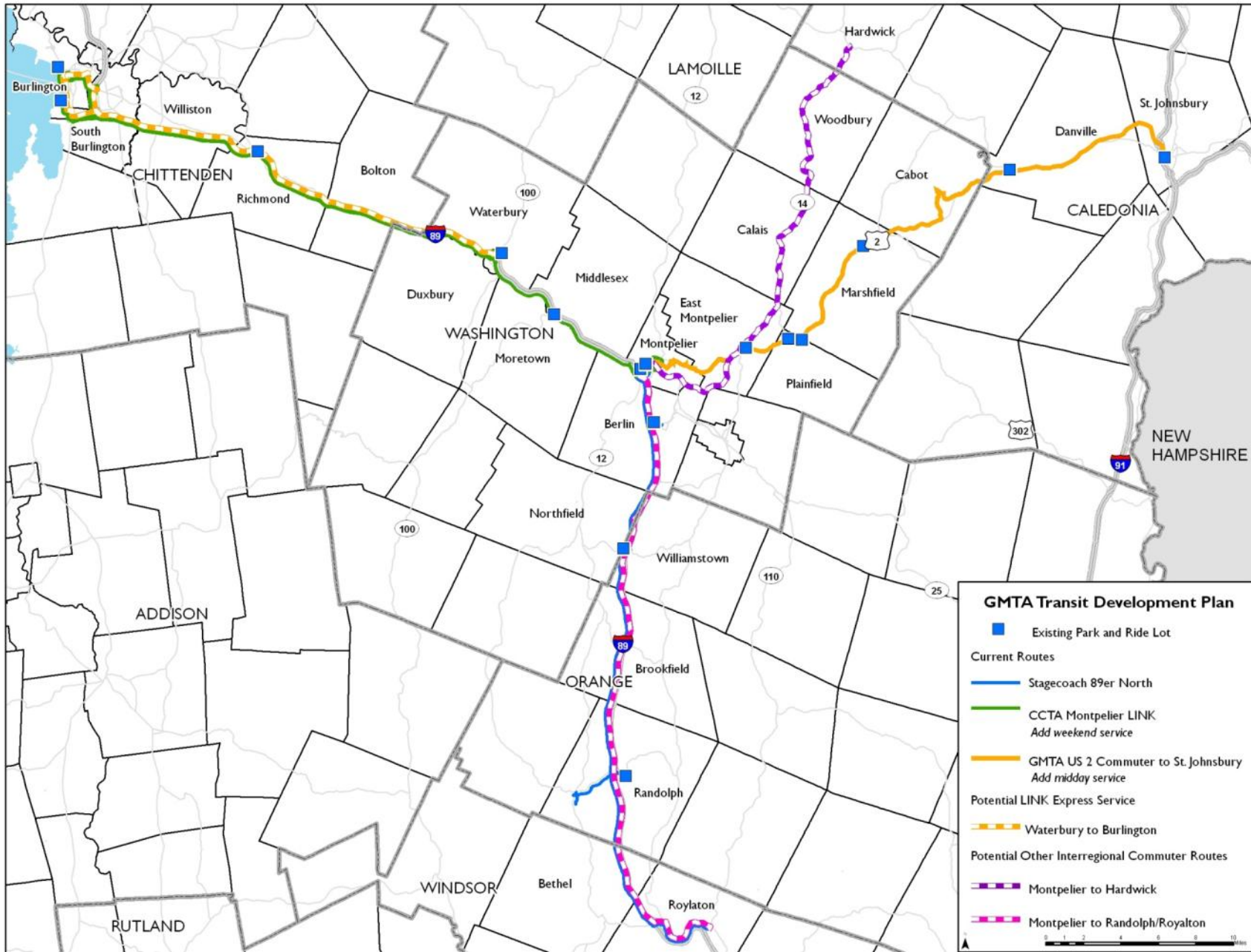
Agenda

- Interregional commuter services
- Regional commuter services
- Year-round local routes
- Shuttle routes
- Seasonal routes
- Facilities
- Technology



Interregional Services

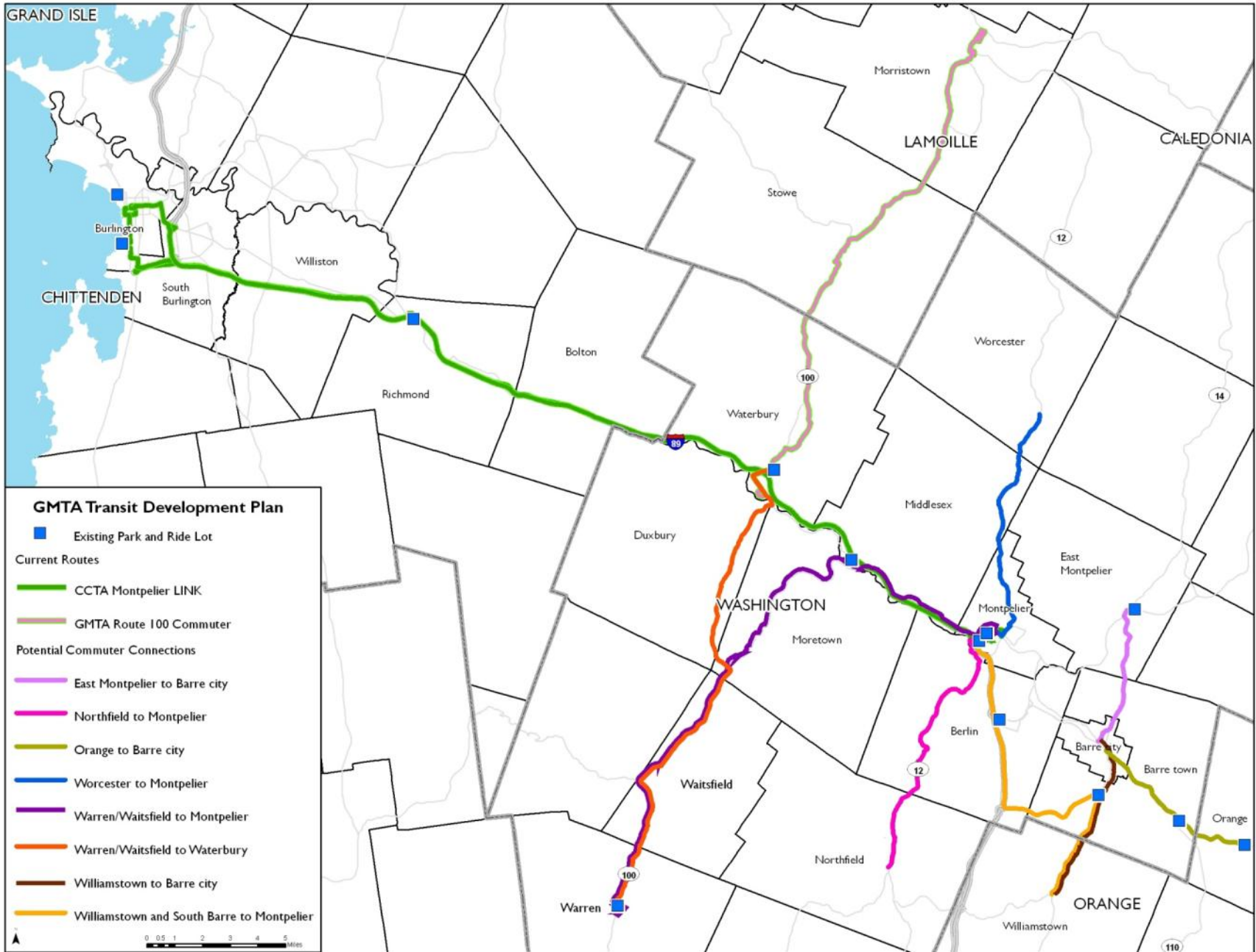
- Waterbury – Burlington
- Montpelier – Burlington weekend service
- Montpelier – Randolph/Royalton (with Stagecoach)
- Montpelier – St. Johnsbury midday service (with RCT)
- Montpelier – Hardwick via VT 14



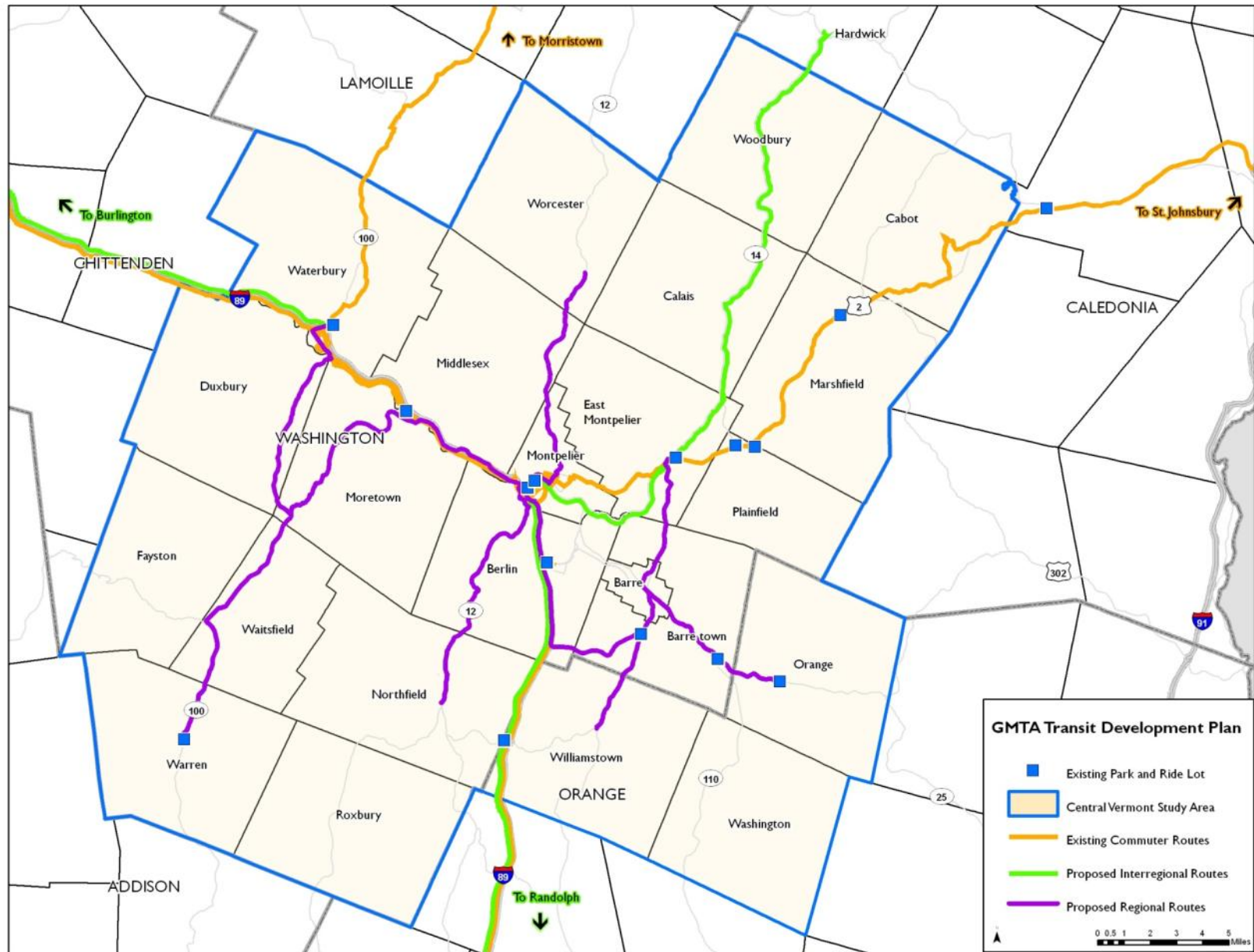


Commuter Routes

- Montpelier – Northfield via VT 12
- Montpelier – Worcester via VT 12
- Montpelier – Warren via Moretown
- Mad River Valley – Waterbury (Link transfer)
- Montpelier – South Barre/Williamstown
- Barre – Williamstown
- Barre – East Montpelier (transfer to/from Hardwick)



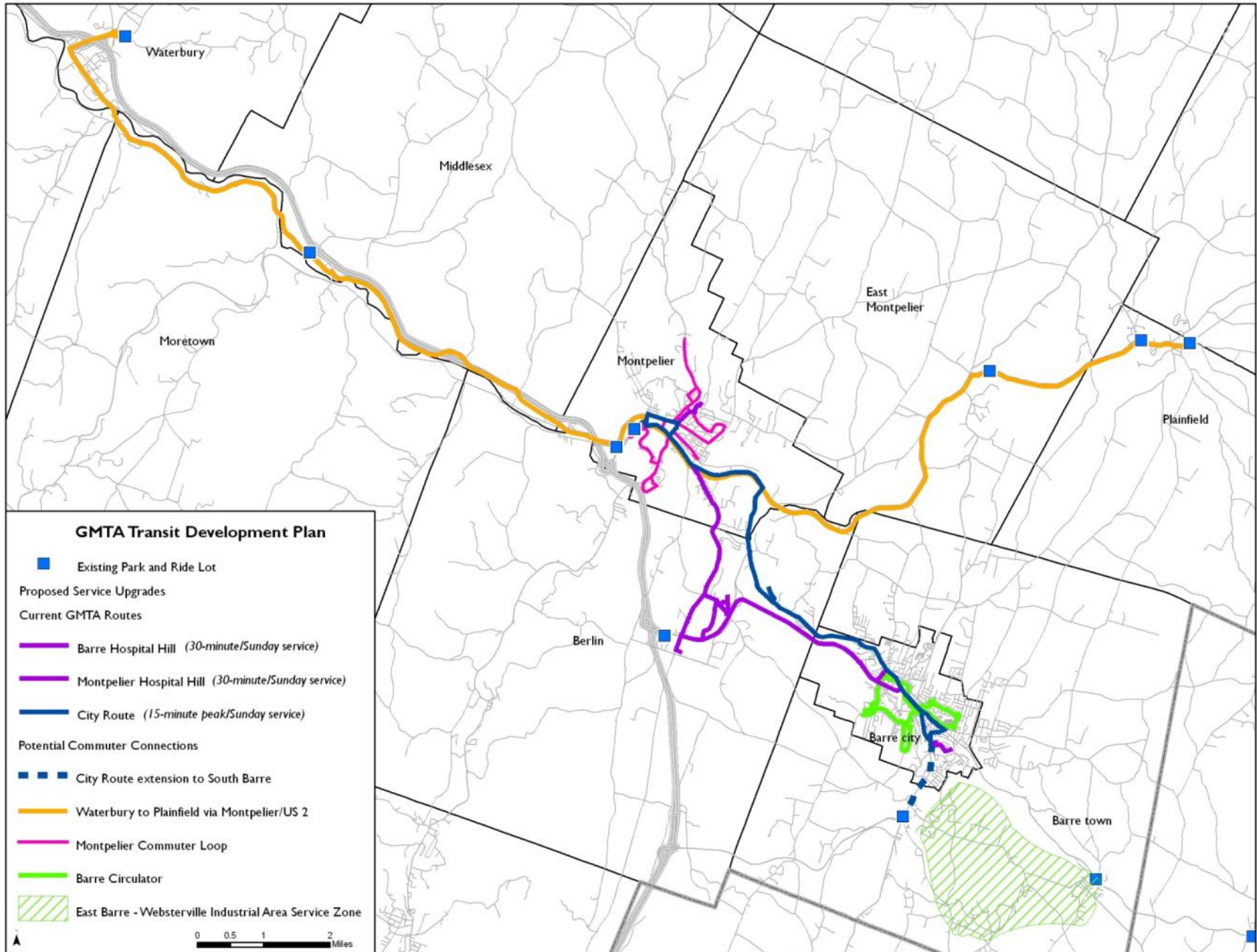
Composite Map of Commuter Services





Year-round Local Routes

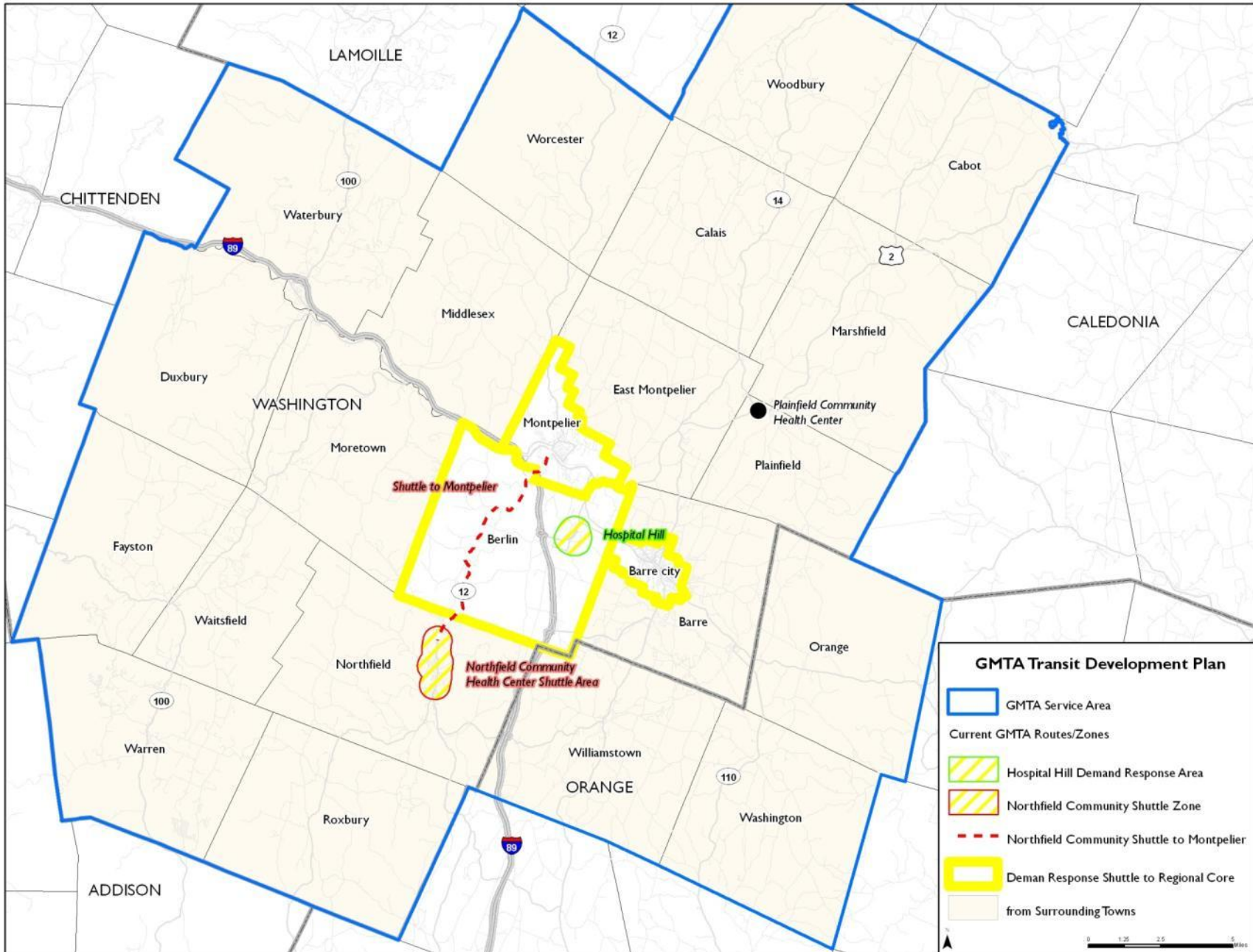
- Sunday service on local routes
- Full day service to Plainfield
- Full day service to Waterbury
- Extend City Route to South Barre
- Improve peak frequency on City Commuter
- Improve frequency on Hospital Hill routes
- Extended span of service on Hospital Hill routes
- Barre City circulator
- Service to East Barre/Graniteville





Shuttles/Demand Response

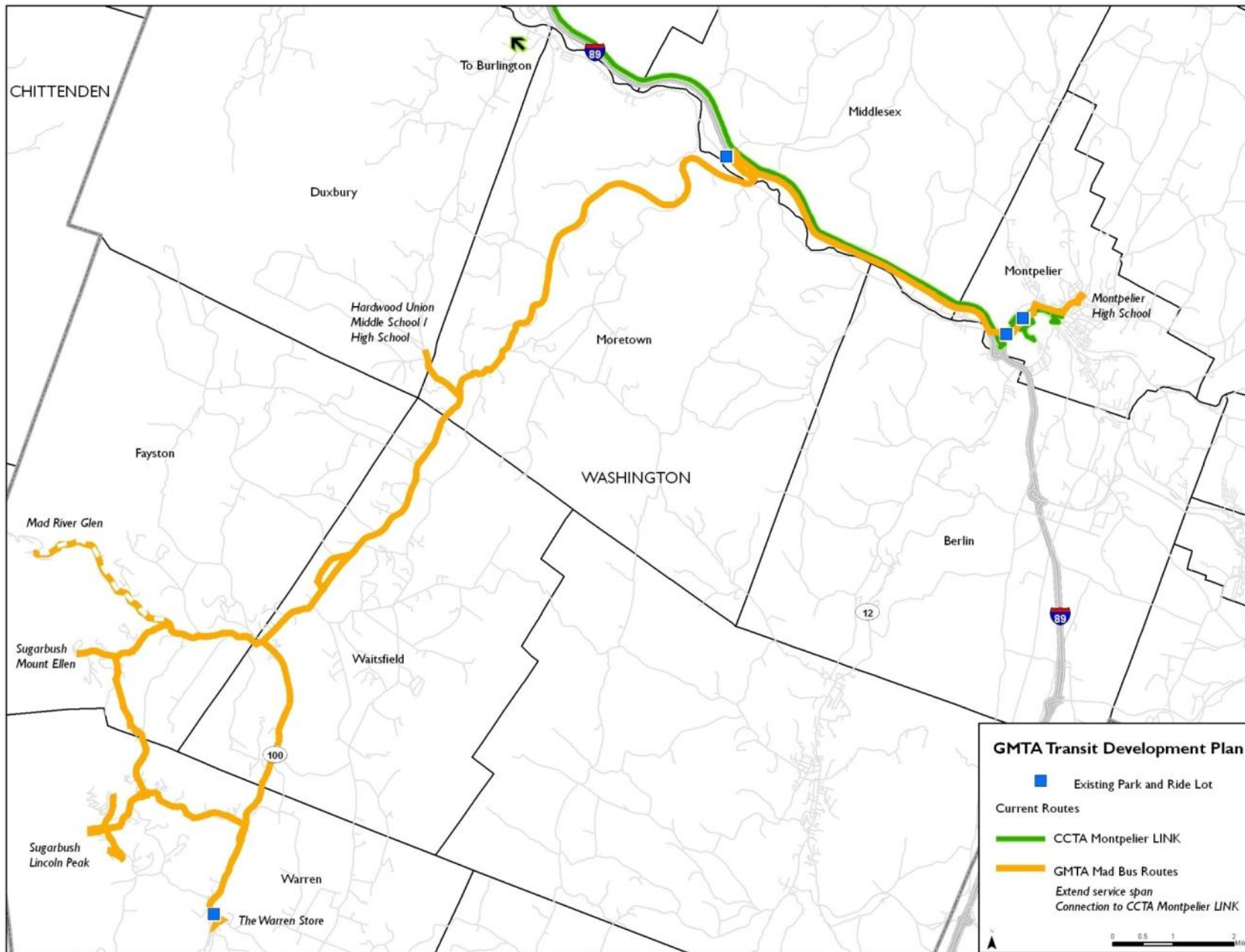
- Increase Northfield community shuttle service
- Increase demand response service in Hospital Hill area
- More service to Plainfield Health Center (until regular route in place)
- More general public DR service to Montpelier, Barre and Berlin





Seasonal Routes

- Extend service period for Mad Bus routes
- Better service for employees
- Additional LINK service for seasonal employees





Facilities

- Additional passenger shelters
 - Solar lighting
 - Schedule information
- Bicycle facilities
 - Racks and lockers at bus stops
 - More capacity on buses (as is feasible)
- Park & Rides to serve commuter routes
- Montpelier Intermodal Center



Technology

- Real-time passenger information
- Wi-fi on commuter buses
- Trip planning software
- Smartcard fare payment
 - Integrated with CCTA

Ways to Make Your Voice Heard

- Via e-mail: info@gmtaride.org or darmstrong@cctaride.org
- Via phone: 802-864-CCTA
- Via fax: 802-864-5564
- Via mail: GMTA TDP Comments
CCTA
15 Industrial Pkwy
Burlington, VT 05401